



Desktop Printers G500U/UES

High-Tech Power with a Customer Friendly Price

"Twin-Sensor Technology" makes the G500 perfect for printing on all types of specialty materials especially for retail and industrial applications



300 meter ribbon plus the optional label stand provides maximum printing volume



"Twin-Sensor" technology allows you to use a broad range of labels



Available interface combinations include:

- USB2.0, Serial and Ethernet
- USB2.0 and Parallel



Strong and stable mechanism design for long term reliability



G500U/UES

Desktop Printer

Model		G500U/G500UES
Print Method		Thermal Transfer/Direct Thermal
Resolution		203 dpi (8 dot/mm)
Print Speed		5 IPS (127 mm/s)
Print Width		4.25" (108 mm)
Print Length		Min. 0.16" (4 mm)**; Max. 68" (1727 mm)
Processor		32 bit RISC CPU
Memory	Flash	8 MB Flash (4 MB for user storage)
	SDRAM	16 MB
Sensor Type		Adjustable reflective sensor 2 fixed transmissive sensors, central aligned
Media	Types	Continuous form, gap labels, black mark sensing, and punched hole; label length set by auto sensing or programming
	Width	1" (25.4 mm) Min. - 4.64" (118 mm) Max.
	Thickness	0.0024" (0.06 mm) Min. - 0.01" (0.25 mm) Max.
	Label Roll Diameter	Max. 5" (127 mm)
	Core Diameter	1" (25.4 mm), 1.5" (38.1 mm), 3" (76.2 mm)
Ribbon	Types	Wax, wax / resin, resin
	Length	981' (300 m)
	Width	Min. 1.18" (30 mm) – Max. 4.33" (110 mm)
	Ribbon Roll Diameter	2.67" (68 mm)
	Core Diameter	1" (25.4 mm)
Printer Language		EZPL, GEPL, GZPL, GDPL auto switch
Software	Label Design Software	GoLabel (for EZPL only)
	Driver	Vista, Windows 7, Windows 8 & 8.1, Windows 10, Windows Server 2008 R2, 2012, 2012 R2, 2016, 2019, MAC, Linux
	SDK	Win CE, .NET, Windows Vista, Windows 7, Windows 8 & 8.1, Windows 10, Android, Mac, iOS
Resident Fonts	Bitmap Fonts	6, 8, 10, 12, 14, 18, 24, 30, 16x26 and OCR A&B Bitmap fonts 90°, 180°, 270° rotatable, single characters 90°, 180°, 270° rotatable Bitmap fonts 8 times expandable in horizontal and vertical directions
	TTF Fonts	TTF Fonts (Bold / Italic / Underline). 0°,90°, 180°, 270° rotatable
Download Fonts	Bitmap Fonts	90°, 180°, 270° rotatable, single characters 90°, 180°, 270° rotatable
	Asian Fonts	16x16, 24x24. Traditional Chinese (BIG-5), Simplified Chinese(GB2312), Japanese (S-JIS), Korean (KS-X1001) 90°, 180°, 270° rotatable and 8 times expandable in horizontal and vertical directions
	TTF Fonts	TTF Fonts (Bold / Italic / Underline). 0°,90°, 180°, 270° rotatable
Barcodes	1-D Bar Codes	China Postal Code, Codabar, Code 11, Code 32,Code 39, Code 93, Code 128 (subset A, B, C), EAN-8/EAN-13 (with 2 & 5 digits extension), EAN 128, FIM, German Post Code, GS1 DataBar, HIBC, Industrial 2 of 5 , Interleaved 2-of-5 (1 2 of 5), Interleaved 2-of-5 with Shipping Bearer Bars, ISBT-128, ITF 14, Japanese Postnet, Logmars, MSI, Postnet, Plessey, Planet 11 & 13 digit, RPS 128, Standard 2 of 5, Telepen, Matrix 2 of 5, UPC-A/UPC-E (with 2 or 5 digit extension), UCC/EAN-128 K-Mart and Random Weight
	2-D Bar Codes	Aztec code, Code 49, Codablock F , Datamatrix code, MaxiCode, Micro PDF417, Micro QR code, PDF417,QR code, TLC 39, GS1 Composite
Code Pages		CODEPAGE 437, 737,850, 851, 852, 855, 857, 860, 861, 862, 863, 865, 866, 869, WINDOWS 1250, 1251, 1252, 1253, 1254, 1255, 1257 Unicode UTF8 - UTF16BE - UTF16LE
Graphics		Resident graphic file types are BMP and PCX, other graphic formats are downloadable from the software
Interfaces		USB 2.0 USB 2.0 Serial port: RS-232 (DB-9) IEEE 802.3 10/100 Base-Tx Ethernet port (RJ-45)
Control Panel		Two bi-color status-LEDs: Ready, Status Control key: FEED
Power		Auto Switching 100-240VAC, 50-60Hz
Environment	Operation Temperature	41°F to 104°F (5°C to 40°C)
	Storage Temperature	-4°F to 122°F (-20°C to 50°C)
Humidity	Operation	30-85%, non-condensing
	Storage	10-90%, non-condensing
Agency Approvals		CE (EMC), FCC Class A, CB, CCC, cUL, KCC, BIS, EAC
Dimension	Length	11.2" (285 mm)
	Height	6.8" (171 mm)
	Width	8.9" (226 mm)
Weight		5.51 lbs (2.5 Kg), excluding consumables
Options & Accessories		Cutter Label Dispenser External label roll holder for 10" (250 mm) O.D. label rolls External label rewinder

* Specifications are subject to change without notice. All company and/or product names are trademarks and/or registered trademarks of their respective owners.

** Minimum print height and maximum print speed specification compliance can be dependent on non-standard material variables such as label type, thickness, spacing, liner construction, etc. Godex is pleased to test non-standard materials for minimum print height and maximum print speed capability.

Applications

Applications for Labels & Barcodes

G500U/UES series is your best friend or getting the job done instantly.



Retail

Pricetags, content labels, receipts for registered mails, postage labels, etc.

Warehouses, Logistic & Transportation

Case pack labels, address labels, product serial number labels, inventory management, shipping labels, or related industrial applications.

Administration

ID cards, document and records management, access control management, library management & organization and classification system, ISBN application, etc.

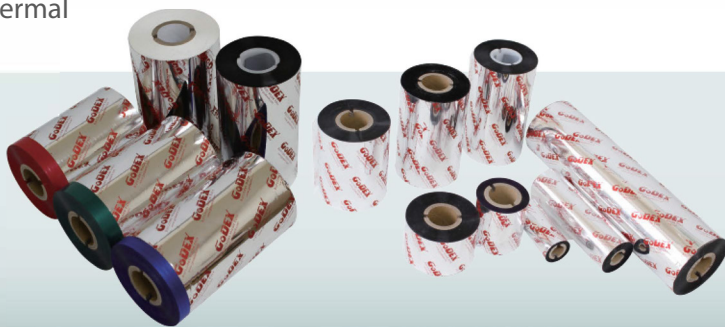
GoDEX

RIBBON S

High quality original GoDEX thermal transfer ribbons

GoDEX offers premium thermal transfer ribbons that will fit most of your printing applications.

- Wax
- Wax/ Resin
- Resin
- Near Edge



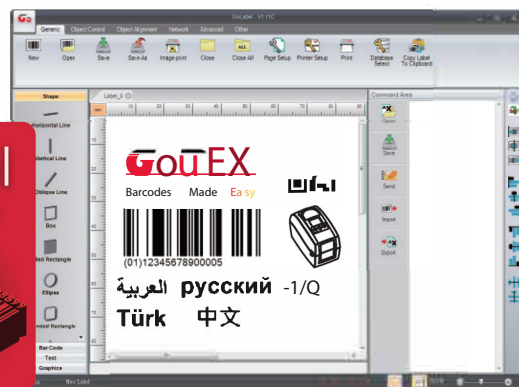
GoDEX

LABEL DESIGN SOFTWARE

GoLabel Software/ User Friendly

GoLabel is based on a WYSIWYG (what you see is what you get) user interface, makes everything so easy for you to create and print barcode labels. GoLabel is the first-choice label design software that you can't miss it!

Go visit www.godexintl.com and download GoLabel to experience it!



MUSTEK

Mustek Technologies Private Limited.
No. 35/B, Doddanekundi Industrial Area Rd,
behind IFB Automotive Private Limited,
Ferns Paradise, Doddanekundi,
Mahadevapura, Bengaluru, Karnataka-560048

Contact Us:
080-43722483 | +9108503777
sales@mustekindia.com